

Victory! Khan blocks MSG Sphere

NOAH ENAHARO

A difficult year for Newham ends in a victory for people power with the decision by London Mayor Sadiq Khan to block plans to build the MSG Sphere.

The gigantic eyeball-shaped dome planned for the heart of Stratford was abandoned after a long-running campaign by local residents, community groups and political leaders.

On 20 November Khan rejected plans for the 300ft high two billion dollar entertainment venue on the opposite side of the railway tracks from the Westfield Stratford shopping centre bus station. Days later the American devel-

opers admitted defeat and announced they planned to find another city for the dome.

Khan said the dome, proposed by the Madison Square Garden Entertainment company (MSG) which would be as tall as Big Ben and coated in LED advertising screens, was rejected on three grounds: light pollution, lack of "green" credentials, and its impact on heritage sites in the area.

A spokesperson for the Mayor's Office said: "The Mayor has seen independent evidence that shows the current proposals would result in an unacceptable negative impact on local residents."

Khan's decision was welcomed by Newham's politi-

cians and residents, most of whom have opposed the plans.

Newham Mayor, Rokhsana Fiaz, called it 'monumentally significant'.

"He has placed the health and well-being of residents living in Newham first," she said. "We have always argued that the intrusion of the MSG Sphere on the lives of our people will be huge. Today is a monumental victory for the public interest, for democratic accountability, and all Newham residents."

Nate Higgins and Danny Keeling the two Green councillors for Stratford Olympic Park also welcomed Khan's intervention.

Higgins said: "We are abso-



Photo via london.msg.com

"This decision is a testament to the power of grassroots campaigning."

lutely delighted that our campaigning on behalf of residents in Stratford Olympic Park alongside *Against the MSG Sphere London* has paid off. We would not be here today without the work of so many incredible campaigners."

Councillor Keeling added: "In a housing crisis, and an area with multiple venues already, including the London Stadium, cancelling this eyesore was the correct thing to do."

The milestone decision follows a five-year campaign led by members of the *Against the MSG Sphere London* group.

The group said: "This decision is a testament to the

power of local residents and grassroots campaigning."

Bo Chapman, a long-time member of the group who has lived in Stratford for 26 years, told *Newham Voices*: "This is a reminder that our voices matter, are powerful, and that there is hope for the ordinary people of Newham."

Despite reports that the government may yet step in to save the project MSG Chief Executive James Dolan said the firm would not appeal to reverse Mr. Khan's decision. "It really is the end of the line for London," he said, "why doesn't London want the best show on earth?"



Grace Kenneth-Jimah

Campaign for East Ham's cupcake queen

See page 11

Happy holidays and we'll be back with more in 2024!

Newham Voices wishes all our readers, supporters and partners a wonderful holiday and a prosperous New Year.

In 2024 we'll be back with all your favourite news and views PLUS more coverage of the men and women who play such a starring role in the fortunes of West Ham United.

In January we welcome new sports writers Edward

Otto and Piper Bradford-Reynolds who will provide a special focus on West United's women's squad as well as the first in a series of player-profiles of Hammers stars.

Naturally, we will still be On the Ball in 2024 with our own sports commentator Mickey Ambrose and with all your favourite columnists and regular features. See you then!



By local people, for local people

Our aim is to provide a voice for all of Newham's people. We are committed to helping you share your news, views and experiences with each other. We aim to be transparent, accountable and responsive to your needs.

www.newhamvoices.co.uk

Newham Voices is a not-for-profit newspaper published by Social Spider Community News: Visit socialspidercommunitynews.co.uk

Editor-in-Chief

Aidan White 07946 291511

Editor

Jean Gray

Chief Reporter

Neandra Etienne

Designer

Mary Schrider

Editorial Team

Mickey Ambrose, Dean Armond, Irfan Badshah, Andrew Baker, Sylvie Belbouab, Fawn Bess-Leith, Cecilia Cran, Phoenix Debola, Noah Enahoro, Annette Fry, Wendy Jackson, Peter Landman, Shofa Miah, Phil Mellows, Zhenreenah Muhxinga, Sheila Nursimhulu, Samiro Fortes Oliveira, Julia Omari, Farzana Rahman, Rebekah Samuel, Daphne Stedman, Lorraine Tapper, Winston Vaughan and Beatrice White

Advertising

Call: 07711 057 096

Email: maia@socialspider.com

For licensing enquiries:

licences@socialspider.com

Thank you to all of our supporters!

Complaints

If you have a complaint regarding the content of our newspaper or website contact the editor at editor@newhamvoices.co.uk Or by phone: 07946291511.

We will normally respond to your complaint with a final decision within 21 calendar days. If we uphold your complaint, we will tell you about our actions to remedy the situation. If you are not satisfied you can submit a formal complaint to IMPRESS, who will independently examine your complaint. *Newham Voices* agrees to be bound by the outcome of IMPRESS investigations.

For more information, go to www.newhamvoices.co.uk/complaints-policy

For general inquiries email us at: info@newhamvoices.co.uk



Council Notebook

Services under pressure as Council takes aim at £14 million deficit

Peter Landman reports from the Council cabinet on budget cuts to deal with overspending that will extend well into 2024

Newham Council will slash its looming £14 million budget deficit with a crisis programme of savings that will affect jobs, support for young people and money available to tackle the Borough's deepening homes crisis.

The Council cabinet has agreed a list of urgent cuts over the coming months to reduce the budget deficit by half and warned of more to come next year as officials scramble to balance the books.

Cuts agreed by the Council involve:

- Fewer jobs for agency workers
- A ban on overtime working by Council staff
- A freeze on recruitment for Council jobs

There will also be less money spent on young people's services and some resources allocated for social housing will be transferred to address the homelessness and temporary accommodation crisis.

Savings will be made across a range of Council areas including adult social care (£3,433,000); housing and community wealth (£600,000); transfer of social housing for 2023/24 to temporary accommodation (£1,770,000) and youth services (£1,200,00); in total more than half of the deficit will be dealt with in the short term.

Council leaders blame government cuts, economic austerity and neglect over the crisis facing local authorities with high levels of deprivation for the financial crisis.

Cllr Zulfiqar Ali, the cabinet member for finance, told the meeting that areas such as funding for social care of both adults and children are grossly underfunded by government. He said London's homelessness crisis is the most severe in the country and that London boroughs have an average estimated overspend of £12m in 2023/24, all as a result of the failure of government policy.

Part of the problem facing the Council has been a spike in spending on homelessness. There was a 35 per cent increase in the number of households presenting as homeless from February 2022 to 2023. In July it was revealed the Council had spent £7.4 million more than its budget for temporary accommodation.

Around seven per cent of the Borough's residents living in temporary accommodation are placed in hotels, which has put "massive pressure" on the Council's finances.

As a result the Council is planning

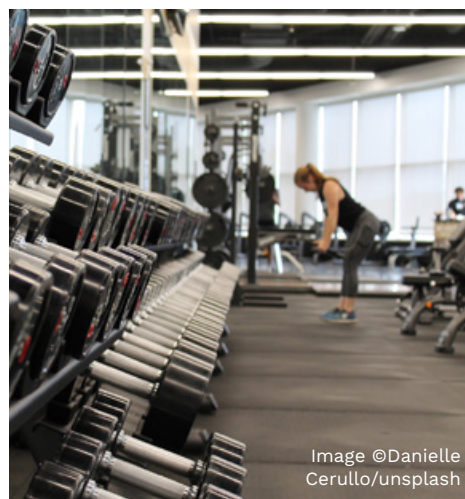


Image ©Danielle Cerullo/unsplash

budget deficit from £14.2m to £7.3m.

"Years of austerity, cuts in funding, high inflation, higher demand for key services and the lack of reform to local government funding is stretching our budget like never before," she said.

Despite the latest cuts problems will still remain, so more cuts are expected in the budget for next year.

All change at the gym: new contract for leisure centres

The Council has agreed a combined leisure management health promotion contract with Greenwich Leisure bringing to an end the existing arrangement with Active Newham.

The new deal will recognise the need for more physical activity and the high incidence of obesity, particularly among children

It includes a range of health promotion initiatives, including free swimming for children under 16, and people over 60; specially designed classes and facilities for older people; lower intensity classes and activities for people new to physical exercise

There will be discounts for community projects on physical activity, with existing discounts for people on benefits and over 60 and free off peak membership for refugees in Newham.

Newham MPs vote on Gaza ceasefire call

Sir Stephen Timms, the MP for East Ham, was one of 56 Labour parliamentary rebels who defied the Labour Party leadership on 14 November calling for an immediate and complete ceasefire in the fighting in Gaza and Palestine.

Newham's other MP, Lyn Brown, who is Labour's Shadow Africa Minister was in Kenya at the time of the vote, abstained on the crucial vote in a pairing arrangement with a conservative MP also taking part in her mission.

Brown said her office had received an "unprecedented volume of correspondence" from local residents and others on the issue.

In a comprehensive 2,000-word response to requests that she vote for an immediate ceasefire she said, in line with Labour policy, she supported a humanitarian "cessation of violence" that could lead to an enduring ceasefire, but she concluded with an emphatic message: "I believe the horrors being inflicted on the people of Gaza must end now."



Advertise with us

Email maia@socialspider.com
or call 07711 057 096

Aidan White reports on why volunteers at the Carpenters Estate are in party mood this Christmas

Royal award for Carpenters Café

The work of the volunteer community on the Carpenters Estate in Stratford has won a royal seal of approval with a special award from the King.

The Carpenters Café, an open-door food-bank, training hub and drop-in centre for people in need, has received the King's Award for Voluntary Service – the MBE for volunteer groups.

Tee Fabikun, the organiser and manager of the café which operates out of the former Tenant's Management Organisation building on the estate, was delighted. "I'm surprised but very happy about this," she told *Newham Voices*, "it's a particularly important tribute to all our volunteers who give up their time and have made such a success of the café."

The café has proved to be a lifesaver for hundreds of

needy people since it opened its doors in 2007. There are some ten regular volunteers who provide a range of support services.

"Around 40 to 50 people will come on a quiet day," said one volunteer.

As well as the regular food bank packages, the café provides targeted support and urgent assistance to vulnerable groups.

This includes providing "starter boxes" for people, many of them youngsters, who are just released from prison. Working with the probation service the café helps them get back on their feet, providing not just food and clothes but a safe route back into society.

There is also special support for the homeless and people living in sheltered accommodation.

In recent weeks the café has

also launched a programme of targeted training for women, many of them the victims of domestic violence.

This training, using state of the art computer equipment, gives women a chance to learn basic computing skills that will improve their job prospects and help them make a fresh start.

The award to Carpenters Café is the first issued in the name of His Majesty King Charles III. It was first established in 2002 to celebrate Queen Elizabeth II's Golden Jubilee and is equivalent to an MBE, and the highest honour awarded to voluntary groups in recognition of outstanding community service.

Carpenters Café was one of only 13 London organisations to receive the award and the only winner in Newham. Altogether 226 groups in Britain have been recognised.



Samantha White (left) and Tee Fabikun – the leaders of Carpenters volunteer force ©Andrew Baker

Party time at Dockland Centre as food transport gets boost

Around the corner from Carpenters Café, there's also a smile on the face of Samantha White, the manager of the Carpenters and Dockland Centre which every week is supporting more than 700 people with food parcels as well as hygiene, sanitary and cleaning products.

Samantha and her team of around 14 volunteers are celebrating a gift that has sparked life into the centre's faltering food collection service.

The acquisition of an electric van recently had given the centre a boost, promising a green and efficient way of delivering and collecting food for their food bank service, one of the largest in Newham.

But the van came with a challenge – how to charge its big batteries which were receiving a trickle of electric charge through the three-point plug connection.

Now, thanks to the generosity of local solar technology company Rainbow Energy, based in Marshgate Lane, Pudding Mill, the van has a purpose built unit that pro-

vides a fast charge to keep the van on the road.

"It's made a fantastic difference to our work," said Samantha. "We're no longer kept waiting for the van to be charged up and it's had a huge impact on our food collections."



The link with Rainbow Energy has also given a boost to Christmas celebrations for children on and around the Carpenters Estate. A special charity action by *Give Back London*, a charitable initiative of Rainbow Energy's office manager Su-Yen Foong, will support a Christmas party, for up to 100 children who use the

Centre's childcare service, on 15 December.

The party is a special event that adds to the support the Centre already provides. "Our food bank is supporting 711 people and our Warm Haven is already a welcoming community café," said Samantha, "this is where people can get some hot food, drinks, clothing, charge their mobile and online devices and use the showers. All of it is free to people who need it."

"The party will be a fantastic event," she said. "There will be a Santa's grotto and presents for everyone."

Give Back London founder Su-Yen Foong says up to 100 children will attend the party. "We will be covering all the costs," she said, "including providing an entertainer, a range of delicious food treats as well as gifts for all of the children."

The Carpenters and Dockland Centre is a part of the Dockland Settlement which also includes centres on the Isle of Dogs and Rotherhithe and some of the children from there will join the party on the 15th.

Advertisement

MARINE AND COASTAL ACCESS ACT 2009 APPLICATION FOR ROYAL VICTORIA DOCK BRIDGE AND JETTY REFURBISHMENT (RVDB)

Notice is hereby given that **The Silvertown Partnership LLP, 5 Merchant Square, London, W2 1BQ** has applied to the Marine Management Organisation under the Marine and Coastal Access Act 2009, Part 4, for a marine licence to undertake refurbishment of the Royal Victoria Dock Bridge and Jetty.

Copies of the application and associated information may be viewed online in the Public Register at www.gov.uk/check-marine-licence-register.

Representations in respect of the application should ordinarily be made by:

- Visiting the MMO public register at https://marinelicensing.marinemanagement.org.uk/mmofox5/fox/live/MMO_PUBLIC_REGISTER/search?area=3 and accessing the 'Public Representation' section of case reference MLA/2023/00362;

However, we will also accept representations via the following formats:

- By email to marine.consents@marinemanagement.org.uk; or alternatively
- By letter addressed to Marine Management Organisation, Lancaster House, Hampshire Court, Newcastle upon Tyne, NE4 7YH

In all cases, correspondence must:

- Be received within 28 days of the date of the first notice on 30th of November 2023;
- Quote the case reference; and
- include an address to which correspondence relating to the representation or objection may be sent.

The Marine Management Organisation will pass to the applicant a copy of any objection or representation we receive.

WE OFFER LICENCE ADVERTISING FOR LOCAL BUSINESSES

Call 07711 057 096 or Email licences@socialspider.com

Tunnel vision on a local lifeline

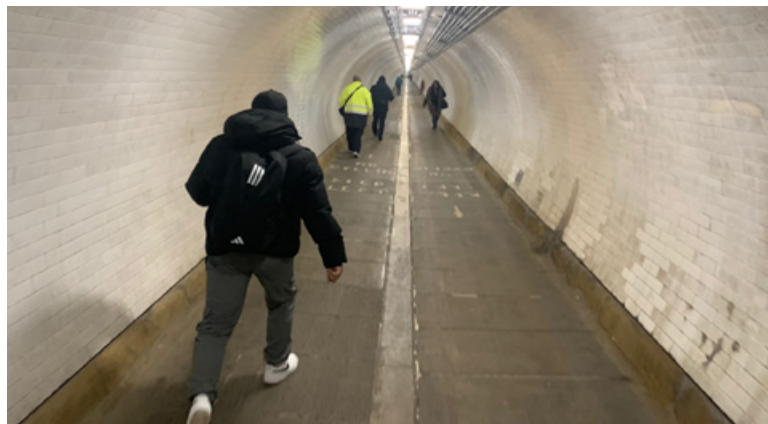
JAMES MORGAN

People living and working in the south of Newham have been faced with an arduous and prolonged period of inconvenience with the north lift of the Woolwich Foot Tunnel being out of service.

The lift on the Newham side of the tunnel has been halted for many months, with the south lift continuing its unpredictable yet more dependable service.

For many, the tunnel – which since 1912 has been connecting the boroughs of Newham and Greenwich some ten feet below the Thames riverbed – is a lifeline. According to The Royal Borough of Greenwich, which manages the tunnel, around 300,000 people use the service annually.

Originally built for dockers to access the industrial hub of the Royal Docks in a part of London devoid of bridges, today the tunnel is a vital thoroughfare for people commuting to work, visiting friends or family, and accessing shopping



and entertainment.

This free route is particularly important for residents of North Woolwich, who have limited access to services in this isolated part of Newham. The tunnel is also a key cross-river link for walkers on the Capital Ring Walk.

While for many people the malfunctioning lift means an impromptu leg work out and lung bursting climb up over 100 steps of the spiralling staircase, for those with disabilities and mobility issues, and for parents and carers with prams, is a no-go area.

Tom Barratt cycles to work in Newham from south London during the week and uses the tunnel to cross the river (cyclists are permitted to dismount and push their bike while underground).

“My journey to work is always trouble free until I reach Woolwich and have to cross the river”, explained Tom. “The southern lift works most of the time, and it is usually repaired within a few days when it breaks down. However, the northern lift has never worked during the time I have used it. Every day

I get to the northern lift, give a deep sigh, lift my bike on my shoulder and slowly walk up those 127 steps.”

Tom added that he thought that denying residents a free means of crossing the river (the costly DLR is the only other option) was deeply unfair:

“In its current state, the tunnel is inaccessible to wheelchair users and those with impaired mobility. With the ferry closing down over the summer, many people will have had no way of crossing the river, which I think is scandalous.”

According to their official website, in a post dated June 2023, The Royal Borough of Greenwich is working hard to develop a proposal that will “ensure equal access and a better lift service for all tunnel users.” They add that they are aware of, and apologise for, the faults. With the poor care of this vital service an all too familiar and continuous reality, only the most optimistic of cross-river commuters will see light at the end of this tunnel.

World Aids Day

SHEILA NURSINHULU

Wear the Red Ribbon

World AIDS Day is 1 December, with a theme this year of ‘Let communities lead’.

Thankfully, today in the UK, it is very rare that someone is diagnosed with AIDS, but the diagnosis of late-stage or advanced HIV remains a reality and, if left untreated, can cause serious illness.

Current treatment for HIV reduces the virus to an ‘undetectable’ level. This protects the immune system, allowing people to lead a healthy life. As the virus can also not be passed on at such a low level, it enables them to live a normal life.

According to the Terrence Higgins Trust: “We truly can reach the life-changing goal of ending new HIV cases in the UK by 2030, but we can’t do it without you”.

For advice on sexual health in Newham, visit ‘All East Sexual Health Advice and Support’ at www.alleast.nhs.uk

Advertisement



Weekly Recycling is coming...



From 4 December 2023, you can recycle every week!

We’re launching weekly recycling collections to make it even easier for you to recycle more and put less in your rubbish bin.

Let’s bin less and recycle more.

Visit newham.gov.uk/BeBinDayReady

WE ARE NEWHAM.

Plaistow North by-election: It's Independents Day

DEAN ARMOND

The Plaistow North by-election in November was won by Sophia Naqvi, who stood as an independent candidate, overcoming a Labour Party majority of nearly 2,000 to win with 1,266 votes. The turnout was approximately 25 per cent.

Her campaign was supported by Cllr Mehmood Mirza, another independent who also overturned a large Labour majority earlier in the year in a by-election in Boleyn Ward, and Cllr Zuber Gulamussen who had resigned from the Labour Party a few days before the by-election citing his disquiet with the Labour Party response to the humanitarian situation in Gaza.

The three have formed a group known as the Newham Independents, who now outnumber the official Opposition, the Green Party, which has two members of the Council, Nate

Higgins and Danny Keeling.

Belgica Guana, herself a former Labour Party member, has not joined this group but sits as an independent councillor.

Formerly a Labour Party member, Sophia Naqvi resigned several weeks ago in protest at the way that the Labour Party, and in particular party leader Sir Keir Starmer, had responded to the situation in Gaza and the failure to call for a ceasefire.

The by-election was triggered by the unexpected resignation of Cllr. Daniel Lee-Phakoe 'for personal reasons' in October.

The suspension of both the East Ham and West Ham Constituency Labour Parties meant that the Branch Labour Parties in each Ward can no longer select Councillor candidates, so the candidate was selected by Labour Party National Executive Committee. Local resident Aktharul



Sophia Naqvi. Image via Twitter.

Anam was selected as the Labour Party candidate, but his campaign was overshadowed by the developments in Gaza, which has divided Labour members and is an issue that clearly resonated with local residents in Plaistow North.

Newham Council Cabinet has also been impacted by the Gaza situation. Cllr Joshua Garfield, resigned from his position as Cabinet member for Education. His resignation followed a resolution passed at the October Council meeting expressing support for

the Palestinian victims of the conflict.

Plaistow North by-election result November 2023:

www.newham.gov.uk/downloads/file/6768/declaration-of-result-of-poll-plaistow-north-2023

Maternity unit to improve testing

SHEILA NURSINHULU

The maternity unit at Newham Hospital is taking part in a trial to improve routine testing for group B Strep (GBS) during pregnancy.

Although GBS bacteria does not cause infection or illness in adults, and some women may not even know they are a carrier, the implication for a new-born can be serious.

Currently, pregnant women and birthing people are tested if they are deemed to be at risk of carrying GBS, for example, they have a fever during labour.

This trial is designed to establish that testing all pregnant women and birthing people is better. It will also compare two different testing approaches – testing at 35-37 weeks versus testing during labour.

Barts accused over charging of vulnerable women

AIDAN WHITE

A national charity has said that Barts NHS Trust, which includes Newham University Hospital, is failing to protect groups of vulnerable women and wrongly charging them for medical care.

The report into charging for NHS maternity care in some of East London's most deprived areas examined the cases of 36 maternity patients over the past year including women who were living in extreme poverty, or were victims of domestic violence, or were asylum seekers.

As well as claims that many women were being wrongly charged for maternity care, the report by the charity Maternity Action said there was bureaucratic insensitivity in dealing with the women. In one case a destitute woman's evidence of her economic situation was ignored and victims of domestic violence were not believed.

The startling conclusion is that Barts hospitals under-protect vulnerable women, says



Image ©Charles Eugene/Unsplash

Newham health care campaigner Rosamund Mykura.

"There is a cruel pile-up of inequality in maternity care in East London," she said. She blames the government and its "hostile environment" policy in dealing with migrants and asylum seekers for putting added pressure on NHS services.

"The 'hostile environment' regulations and guidance requires NHS Trusts to over-interrogate and under-protect our vulnerable pregnant women in north-east London," she said.

Mykura, the spokesperson for

North-East London Save our NHS, added: "This is particularly dangerous in poor areas where infant deaths (under one year old) are double those in the richest areas. Since 2020 black and black British infant deaths, and Asian and Asian British infant deaths have risen, while deaths for white infants have stayed steady.

"Getting rid of NHS racist charging is an obvious move if the government seriously wants to improve our babies' health outcomes in north-east London."

The detailed evidence in the

report is drawn from a sample of 36 maternity patients in the trust area, covering Barts, the Royal London, Whipps Cross and Newham Hospitals.

On 31 October Maternity Action director, Ros Bragg presented the report to Newham Council's Health and Adult Social Care, Equalities and Air Quality Scrutiny Commission.

At the meeting the Chief Executive of Newham Hospital Simon Ashton, speaking on behalf of Barts Trust, acknowledged the sensitivity of the issues and promised to discuss the problems after the meeting.

A spokesperson for Barts Health NHS Trust told *Newham Voices*: "Like all NHS trusts we have a legal duty to recover costs from patients who are not eligible for NHS treatment. We recognise that payment is a sensitive issue, strive to be fair and transparent with patients, and are committed to continually improving our processes to handle all cases with compassion."

But in recognition of the issues raised, the Trust says

there will be changes.

"After discussions with various groups, internally and externally, we will implement overseas training, and support the women's experience midwives in developing an information sheet for patient packs."

The Trust will also "review our online maternity booking form to identify what can be improved to best identify patients who may be charged, and have them referred to us more swiftly so they can be supported and reassured at the earliest opportunity in their pathway."

Maternity Action has recommended that hospitals must not charge women for health care when they are exempt, for example, if a patient has a current asylum claim, is destitute or has been a victim of domestic violence and they must also stop pursuing debt collection during pregnancy. The group has also called on the Trust to adopt the charity's access guidance as a standard reference in dealing with maternity care cases.

OPEN DAYS



A Levels | T Levels
Vocational

GET TO KNOW US

3

Saturday
February
2024

10.00 am - 12.30 pm



BOOK YOUR
PLACE



Book now newvic.ac.uk/open-days

“Threat to life” from cars at school gates prompts action at Central Park

AIDAN WHITE

After months of delay, plans to eliminate a road safety threat around Central Park School in East Ham are restarting following protests from parents and teachers.

Head teacher Paul Taylor told *Newham Voices* that the problems posed by parents in cars dropping off pupils in the morning and picking them up in the afternoon were growing.

“It’s a threat to life some mornings,” he said. “I have tried to discourage parents from using cars, but so far it has not worked and there’s not really any enforcement in terms of safety.”

He said he had had initial discussions earlier in the year. He sent a fresh urgent message to the Council over lines of cars at the school gates, ignoring the zig-zag lines outside entry points, while



Central Park School in East Ham. Image via Facebook

groups of children and parents were milling around. “We need something to be done before there’s an accident.”

He has the support of many parents. “The current situation feels very dangerous during school drop off and collection periods,” said Ann-Marie Ashton. “There is a need for both an immediate and long-

term solution. This is paramount to protect kids from reckless drivers.”

Now the Council has said it will restart talks with the school over plans to include it in the Borough-wide healthy school streets scheme.

“Newham Council is committed to reducing road danger and exposure to air pol-

lution near schools, and enabling more children and families to walk, cycle and use public transport to get to school,” said a spokesperson.

“Healthy school streets, which involve timed pedestrian and cycle zones around schools at the key drop-off and pick-up times, have now been implemented at 25 schools across the Borough, with excellent results.”

After initial contacts with Central Park Primary School in early 2023 regarding a potential Healthy School Street scheme, the Council says officers are re-starting discussions with the school over concerns raised in the development of the design of the scheme. “We look forward to progressing these important measures soon,” said the Council.

www.newham.gov.uk/schools-education/healthy-school-streets/7

Table of Love and Loss open to all

Residents across Newham are invited to join the Table of Love and Loss event being held at East Ham Town Hall on 3 December to remember and pay tribute to loved ones who have been lost.

As reported last month, the event has been organised by Ayse Hussein in a heartfelt tribute to her cousin Jan Mustafa, who tragically lost her life in Newham. Jan will be remembered, alongside several others who are no longer with us following tragic and painful events.

People will be able to speak directly to those who have sadly lost a loved one, while also having access to a range of support services from specialist organisations.

The event will be held from 1pm - 4.30pm at East Ham Town Hall on 3 December.

Advertorial

Inspiring stories: “I was amazed by NewVlc’s diversity and inclusivity. I knew it was going to be a safe place where I would feel comfortable and supported.”

NewVlc alumna Dorota is an aspiring scientist. She secured a place at University College London to study Biochemical Engineering and is now in her second year of university. She received multiple offers to study biochemistry at Russell Group universities after achieving top grades with A A A in Biology, Chemistry and Maths. Dorota arrived from Poland and joined NewVlc’s Progress to Advanced programme (an intensive GCSE programme aimed at helping students who have studied overseas to get the qualifications they need to progress). We caught up with Dorota to find out a little more about her journey so far.

What made you choose NewVlc?

“When looking for a college I spent hours researching them. The state-of-the-art LRC was my biggest reason to come here. I just knew it was the perfect place for me to study and spend free periods getting on with my work and hanging out with my friends. I was amazed by NewVlc’s diversity and inclusivity, something not many other colleges offered. I knew it was going to be a place where I would feel safe, comfortable and supported.”

How did you find your time at college?

“My experience was awesome! Being able to study my three favourite subjects made me very happy, however it was challenging and required a lot of hard work and dedication. I got great support from the teachers, even throughout the pandemic when we

shifted to remote online learning - I still felt supported throughout.

NewVlc offers a variety of sport activities for young people to participate in, like volleyball, which I loved and played regularly. I was also keen on wellbeing and student mental health - we held lots of college events (online and onsite) to encourage students to learn more about taking care of themselves and different techniques to relieve stress.”

Tell us about projects you got involved in at the college?

“During my first year at NewVlc I was a part of the Here Come the Girls Ambassador with the NewVlc Sports Academy. Being an ambassador involved organising charity events, sports activities and events to raise awareness.

I also had the chance to be a part of the Brilliant Club, (a university-like experience)



Dorota, former NewVlc student

where I studied and wrote an essay about how the Biopsychosocial model affects adolescents mental health, in which I achieved a 1st grade! I am very grateful for the experience since it allowed me to gain research, time-management and critical thinking skills.

Is there anything you wish you had known that you do now?

“At the beginning, I was afraid of participating in the enrichment and sport activities, however there was no need to. Everyone was so friendly and helpful; the extra activities are extremely cool. I also wish I had known that it

is okay to sometimes take a rest day, otherwise you can lose your motivation.”

Who is the most inspiring person you have ever met?

“There are so many, so it’s hard to choose one. I had the opportunity to interview and have a discussion with NewVlc alumni Gerda who is completing her PhD at University of Oxford. She has inspired me and shared invaluable insights about getting into a top university. It was great to learn and see that a NewVlc alumna like Gerda, who also started out like myself, has gone very far. You can watch my interview with Gerda here: <https://youtu.be/b7TUvcYIH3o>.”

What is your advice for anyone considering studying at NewVlc?

Working hard from the beginning of your studies is crucial to achieve great results. If you sometimes feel overwhelmed you can talk to your teachers, take a day off from revising and the energy will come back to you. Remember to take care of yourself and take part in activities that will boost your level of endorphins. Never give up and always believe in yourself!”

So what is next for you?

“I am loving university life studying Biochemical Engineering at University College London.”

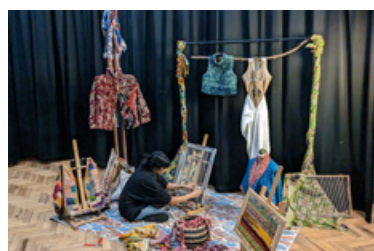
OUT AND ABOUT WITH NEANDRA

Rosetta Arts mural marks 30 years of creative excellence

Clr Rohit Kumar Dasgupta and Rosetta Arts chief Jan de Schynkel unveiled Rosetta Arts 30th anniversary mural at the Gainsborough Centre on 3 November.

The artwork features the different elements that make up Rosetta Arts and the community.

Francesco Mazzarella from London College of Fashion UAL introduced a film about his project *Decolonising Fashion*. Rosetta Arts has worked with him several times on this project: holding workshops at Rosetta Arts with refugees;



Shama Kun, Rosetta Arts Unveiling event. ©Neandra Etienne

Lab E20 loaned their community quilt made up by lots of different people and community groups; a display featuring fashion designer Lee Alexander McQueen CBE; students' work from Rosetta Arts and Caramel Rock. Past student Shama

Kun displayed her work and demonstrated cloth weaving. Shama currently has a workspace studio at Rosetta Arts.

Jan de Schynkel said: "As part of a series of projects to celebrate Rosetta Arts' 30th anniversary year, we commissioned a public artwork by acclaimed photomontage artist, Eleanor Shakespeare, celebrating the special connection between Rosetta Arts and renowned designer Alexander McQueen, but also to celebrate our fashion work and partnerships throughout the last 30 years."

www.rosettaarts.org

Kwanzaa in Newham

Kwanzaa, a seven-day African American and Pan-African holiday that celebrates family, community and culture, was created by Dr Maulana Karenga a professor of African Studies in 1966.

Newham Black Performing and Visual Arts Workshop, founded in 1982 by Tony Cheeseman, Pearla Boyce, Harrian Henry, Peter Mavunga and Nathalie Pierre, previously supported Kwanzaa.

Newham Voices columnist Julia Omari and her family have celebrated Kwanzaa (First Fruits) for around 25 years.

"Kwanzaa is a time to remember our heritage, give thanks to our ancestors and enjoy our family. It's also



©Julia Omari

about understanding the journey of our past, knowing where we stand in our present and actively planning our future, as an individual, a family, a community and a nation."

Kwanzaa begins on 26 December and ends on 1 January

officialkwanzaawebsite.org

100 years of Disney magic at the Royal Docks

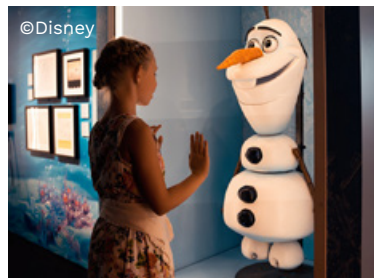
From the moment you step inside the Disney exhibition at the Royal Docks Excel Centre you are transported into a nostalgic magical journey through 100 years of The Walt Disney Company.

"When you believe a thing, believe it all over, implicitly and unquestioningly." - Walt Disney (1901 - 1966)

There's lots to see and learn including rarely seen original works of art, memorabilia, classic cartoons, original costumes and interactive installations. It's amazing to see the props used from Disney's much loved iconic films, TV shows and theatre productions including: *Snow White and the Seven Dwarfs* (1937); the costume bodice used for live-action reference filming worn by Marge Champion, the Carousel horse used by Dick Van Dyke in the Oscar winning musical *Mary Poppins* (1964) the mask and hat from the 1957-1959 *Zorro* TV show worn by Guy Williams; and Mufasa's costume and masks sculpted, painted and designed by Julie Taymor for *The Lion King Broadway Musical* (1997 - present).

Becky Cline, Director, Walt Disney Archives, said:

"It took four years to plan and put together Disney100:



The Exhibition, which includes ten themed galleries, contributions from Marvel Studios, the Walt Disney Archives, additional items from the Pixar Living Archives, the Walt Disney Animation Research Library and the collections of

Walt Disney Imagineering.

But did you know Newham already has a connection to Disney through a Marvel superhero? Millennium Mills was a key location in the *Spider-Man: Far From Home* film starring Tom Holland.

Disney100: The Exhibition was developed and curated by the Walt Disney Archives and Semmel Exhibitions. It runs until January 2024, ExCeL London, One Western Gateway, Royal Victoria Dock, E16 1XL

excel.london/whats-on/disney100-the-exhibition

Fashion campus now open

London College of Fashion, UAL celebrated on 1 November the opening of new East Bank campus with an event that was rooted in east London collaborations.

Guests included Dame Zandra Rhodes, Sir Grayson Perry and British Fashion Council CEO Caroline Rush.

The campus is part of East Bank, the cultural quarter at the heart of Queen Elizabeth Olympic Park.

LCF's East Bank campus is open to the public for their



LCF East Bank campus opening, © David Parry/PA Wire

free exhibition, *Designed for Life*. For more on LCF's Cultural Programme visit: www.arts.ac.uk/colleges/london-college-of-fashion/cultural-programme

Advertisements

LICENSING ACT 2003

APPLICATION FOR A PREMISES LICENCE

COOKIES AND CREAM EXPRESS LTD have applied to NEWHAM COUNCIL for a premises licences for: **Cookies And Cream, 80A Upton Lane, London E7 9LW**

So that the following licensable activities may be provided on the following days and hours:

Hot products and drinks prepared and served between the hours of 23:00-02:00 Monday - Sunday

Newham Council's Licensing Register is kept at the office of the Licensing Team, Town Hall, 328 Barking Road, East Ham, E6 2RT (open from 10.00am to 4.00pm Monday to Friday), 020 3373 1925, where details of the application may be inspected. Any representations against the application must be made in writing and received by the Licensing Team at the above address, by no later than **21 DECEMBER 2023**

Individuals, businesses and other bodies may make representations in relation to the application. Representations must be relevant and can only be on the licensing objectives of the prevention of crime and disorder, public safety, the prevention of public nuisance, and the protection of children from harm. Copies of all representations will be sent to the applicant. Persons making representations will have to appear at the Councils' Licensing Sub-Committee.

Note: It is an offence, liable on conviction to a fine up to £5,000 for a person to knowingly or recklessly make a false statement in connection with the application.

LICENSING ACT 2003

APPLICATION FOR A PREMISES LICENCE

MIPA FOOD LTD have applied to NEWHAM COUNCIL for a premises licences for: **Perfect Pizza 132 Upton Lane, E7 9LW**

So that the following licensable activities may be provided on the following days and hours:

We proposed the sale of hot food and late night refreshment

- Opening hours: Monday-Sunday 11:00-0:00
- Late night refreshments: Monday-Sunday 23:00-05:00
- (Delivery only 0:00-05:00)

Newham Council's Licensing Register is kept at the office of the Licensing Team, Town Hall, 328 Barking Road, East Ham, E6 2RT (open from 10.00am to 4.00pm Monday to Friday), 020 3373 1925, where details of the application may be inspected. Any representations against the application must be made in writing and received by the Licensing Team at the above address, by no later than the **25/12/2023**

Individuals, businesses and other bodies may make representations in relation to the application. Representations must be relevant and can only be on the licensing objectives of the prevention of crime and disorder, public safety, the prevention of public nuisance, and the protection of children from harm. Copies of all representations will be sent to the applicant. Persons making representations will have to appear at the Councils' Licensing Sub-Committee.

Note: It is an offence, liable on conviction to a fine up to £5,000 for a person to knowingly or recklessly make a false statement in connection with the application.

Our Chief reporter on events that reflect culture, history and heritage in Newham



The Up Garden wins Growing Together Award 2023 for Community Gardening

The Royal Horticultural Society (RHS) and BBC *The One Show* has announced The UP Garden in Forest Gate as winner of the Growing Together Award 2023 for community gardening.

The Up Garden released a statement about their win:

“This award is a huge honour and validation of our approach to creating



Pergola and mural ©The Up Garden

a community garden, which is that it is less about knowing about gardening, and more about knowing your community. We hope that The UP Garden inspires other communities to come together to reclaim unused land to fulfil their specific needs.”

Local resident and founder of The UP Garden Suzanne Hu was Lead Project Manager during its construction, and is now Chair of the Committee since its launch.

Work began to clear the site, previously an unused laundry yard in Forest Gate, in the spring of 2022. The local community helped bring new life to the space by having up-cycling workshops to build furniture and planters, community planting workshops to form the different gardening areas, and volunteering sessions were organ-



Community gardeners, Tayshan Hayden Smith and BBC crew ©The Up Garden

ised to create everything needed for the space.

Local businesses also made contributions, donating plants, water tanks, sheds and refreshments.

The Up Garden opened in October

2022 for the local community of all ages to learn about gardening, biodiversity and eco-sustainability.

The Up Garden celebrated the win at their Autumn event, which also marked their first anniversary.

The Up Garden hosts Social Weedia, a weekly community gardening drop-in session, a monthly outdoor work-out takeover, run by GoodGym, and has plans to host Wintertide, a seasonal gathering of nature-based family activities and local music.

The Up Garden applied for funding from People Powered Places. They plan to add a book exchange, community piano and nature trail in 2024.

www.theupgarden.org

The Royal Horticultural Society is a gardening charity. www.rhs.org.uk

Advertisements

Not Yet a YETI

A wintery, interactive storytelling for ages 2-5

based on the picture book by Lou Treleaven & Tony Neal

DISCOVER.ORG.UK

Discover Children's Story Centre

383-387 High St, Stratford, London E15 4QZ

Trustees Opportunities!

Would you consider bringing your skills, knowledge, and experience to the Management Committee of Community Transport Waltham Forest?

We are passionate about supporting people with mobility needs. We are the only remaining Community Transport Service in East London, we have real opportunities to explore the growth and impact of our service in East London.

We welcome applications from people with a wide range of skills though we are particularly seeking people with these broad skill sets below.

- Transport: experience and understanding of transport policy and delivery in London
- Health and Social Care experience and understanding of working in the health or care sector
- Community and lived experience of working in or with a range of community organisations with a knowledge and understanding of current impacts of transport provision on preventing active citizenship.

Diversity is critical for the Management Committee to be effective, and representative of our community needs. We encourage applications from people with lived experience from all ethnic, socio-economic, and professional and personal backgrounds. Whether you are an experienced trustee or thinking of taking up a trustee role we want to hear from you.

For application information please contact:
Helen Tredoux, Director, Community Transport Waltham Forest,
 Low Hall Business Park, Leyton, E10 7AS.
 Email: helen@ctwf.co.uk • Tel: 020 8521 0665

Waltham Forest College



think
BIG

OPEN EVENT

Sat 27th January, 10am - 2pm

GUIDED TOURS | TASTER ACTIVITIES
ADVICE & GUIDANCE | APPLY FOR A COURSE



Register now:
Visit waltham.ac.uk
or scan the QR code.



January Start Courses

If you are looking to retrain, upskill or pursue a new career, we can help.
Discover what's available below and apply today.

Adult Courses:

BOOKKEEPING | BEAUTY | COUNSELLING | DIGITAL AND IT | ENGLISH & MATHS
ENGLISH FOR SPEAKERS OF OTHER LANGUAGES | FASHION | PHOTO EDITING | TEAM LEADING

16-18 Courses:

CONSTRUCTION SKILLS | PATHWAY TO SUCCESS
THE PRINCE'S TRUST TEAM PROGRAMME

Explore courses and apply:
Visit waltham.ac.uk or scan the QR code.



Poverty crisis threatens to dampen the festive season

DEAN ARMOND

The festive season begins on a sombre note for Newham. The Council is grappling with a budget deficit, residents are facing cuts in services and one of Britain's leading poverty charities reports that the Borough is the most destitute in the country.

The Joseph Rowntree Foundation's recent report *Destitution in the UK 2023* makes bleak reading for political leaders and groups fighting social and economic inequality in the Borough.

People are considered destitute if they have not been able to meet their most basic physical needs to stay warm, dry, clean and fed. This can be because they either lack necessities like clothing, heating, shelter or food, or because their income is so extremely low that they are unable to purchase these items for themselves.

Since the last Destitution Survey was conducted in 2019 destitution has increased significantly in all local authorities in the UK, but more in Newham than anywhere else.

When local authorities are ranked by level of destitution,



Image ©Towfiq Barbhuiya/Unsplash

Newham has risen 11 places in the last four years and is now top of the table, with the greatest level of deprivation in the country. In contrast, during the same period, Glasgow has fallen sixteen places.

While the impact of the Covid-19 pandemic and the current cost of living crisis are undoubtedly factors, the local socio-economic conditions mean that Newham has suffered disproportionately.

The JRF Destitution Survey 2023 found:

- Almost three-quarters of people living in destitution were born in the UK, but migrant communities are particularly at risk.

- Almost two-thirds of people experiencing destitution were disabled or had long-term health conditions. These health conditions are now much more likely to significantly limit people's lives than in 2019.

- Black, black British, Caribbean or African-led communities are significantly over-represented.

As the most diverse local authority in the UK, it might be expected that destitution has risen in Newham, which reflects the existing levels of inequality in the UK.

Although Newham is among Britain's fastest growing young and diverse boroughs

with a population of more than 351,000, the fact is that more than seven in ten residents are from Black, Asian, and ethnically diverse communities. These are the groups most at risk from social and economic deprivation.

Despite this, a recent trend has seen rapid change with up and coming districts in Stratford in the north and the Royal Docks in the south attracting increasing investment.

But Newham's deep-rooted inequalities highlighted by the Rowntree report remain a major challenge to the Council.

A quarter of Newham neighbourhoods are among the most deprived in the UK and after housing costs are taken into account nearly half of the residents live in poverty.

The scale of the problems facing residents were outlined by Cllr Zulfiqar Ali in his report to the Council cabinet on 9 October on plans to deal with the Council's £14 million budget deficit.

The pressure on local government and local people as a result of 13 years of austerity, pressures on public services, an ageing population, growing poverty and inequality have been ignored by the govern-

ment, he said.

"High interest rates, and high costs for basics like food and energy are impacting the lives of our residents in ways that are truly challenging," he said.

"They are finding it hard to meet their essential day to day needs, face the threat of homelessness and in some instances the choice to forgo food for themselves because they can only afford to feed their children."

Council Plans Cuts to Solve Cash Crisis – See Page 2.

See *Joseph Rowntree Foundation Deprivation in the UK 2023* at www.jrf.org.uk/report/destitution-uk-2023

Advertisement

ELECTRICIAN

- NICEIC Certificates
- 24/7 Fault Repairs
- Fire Alarm
- WiFi & Wired Internet Cabling
- Telephone Repair & Installation
- CCTV & Ring Door Bells

07544 800166

Tribute to the fallen of all nationalities

BOBBY WAZZO

An understated but heartfelt tribute took place at the Olive Garden Restaurant community space, Forest Gate on Armistice day 2023 at the eleventh hour, of the eleventh day of the eleventh month.

In 2018 local people, supported by Newham Council funding, established the only WW1 memorial in the Country, commemorating both the Anglo/Romanian partnership in the war, also the loss of lives on all sides during the conflict.

More than 600,000 Romanians were thought to have perished during the occupation of their country.

This year the loss of 67,000 Indian troops was also remembered as poppies were laid by

members of the Indian, Romanian and British communities of the Katherine Road area.

Monega Area Residents Association member Ana Citu co-ordinated the poppy laying and described it as "moving when we stood silent for two minutes," adding: "Two of my own family perished in Romania and it is wonderful that we have this little memorial to where we can pay respects.



L-R: Drasht Drashti Patel, Rishit Patel, Constanta Teleguta and Irfan Yildiz

Trike campaign for Grace the cupcake queen of East Ham

LEAH MULLEN

Every child looks forward to Friday, but the students at Brampton Primary in East Ham looked forward to it just a little more: Friday used to be the day Grace Kenneth-Jimah parked outside the school with Velvet, her red and white polka dot delivery trike. Friday was Cupcake Day. (See page 1 picture.)

But several weeks ago, Velvet was stolen from outside of Grace's home.

Grace is a hugely important and popular part of the East Ham community. She heads the Brampton Primary PTA and has run our local toddler groups – her renditions of children's books are legendary

– as well as the school's over-subscribed cooking club.

She's been selling her home-baked cupcakes to delighted patrons since 2017, and in 2022, after many pandemic-related setbacks, she was able to buy Velvet, her custom trike. For a short time, she was the eco- and family-friendly alternative to the ice cream van in East Ham.

Bike theft has long been an issue in Newham, but this crime hit especially hard. Velvet was not only a mode of transport for Grace: it was also part of her livelihood. The community was shocked. Concerned citizens labelled the offence "outrageous" and "awful".

Now East Ham is fight-

ing back against those who took Velvet off our streets. Community members have started a GoFundMe campaign to reinstate the "ice cream man – but with cakes!".

So far, the project has raised more than £1000 of the £3k required. Grace knows there is a long way to go to meet her goal but remains positive, asserting that she's cooking up some "great ideas and offers to make this happen". Speaking to her, it's easy to feel confident that our next Cupcake Day is right around the corner.

If you'd like to get involved and support Grace, please visit <https://gofund.me/47b472fd>



Protect yourself and your loved ones. Get vaccinated in Newham.



For some people, especially the elderly and those with certain health conditions, flu and Covid-19 can cause serious illness. Getting vaccinated as soon as you can is the best way to keep you, your parents, children and other loved ones healthy this winter.

Find out if you're eligible and where to get vaccinated for free near you at www.nhs.uk/live-well/seasonal-health/keep-warm-keep-well/

newham.gov.uk

WE ARE NEWHAM.

SOMETHING'S BREWING

Phil Mellows discovers a great stocking filler for anyone who embraces the traditional East End pub, on screen and off

In 1985 I was invited to the launch party for a new television soap called *EastEnders*. I believe it's still going. The reason I was there, as a journalist writing about pubs, was the *Queen Vic*.

Pubs have a key role to play in soap operas. Coronation Street's *Rovers Return* and *Emmerdale's Woolpack* were already recognised as a device for bringing characters together and enabling them to interact. The *Queen Vic*, though, seemed to be something more, as though it would be unthinkable to set a drama in East London without putting a pub at its heart.

Now a new book, simply titled *East End Pubs*, by Alistair von Lion and Tim George, celebrates this culture, telling the stories of 65 pubs, illustrated with some smashing photography.



Images ©Hoxton Mini Press

"In over 1,000 years of existence," write the authors, "the East End has only had two constants: change and the humble public house. It is the latter's vital presence that constitutes the core of the city's soul".

That may be overblowing it a little, but there's no doubt that in a

fast-changing world pubs are a tangible link to our history. Often, as the authors add, it's the pubs themselves that are swept away or gentrified, making those that have survived that much more important.

Browsing *East End Pubs*, some real beauties catch the eye, and it feels like East London has been specially blessed with survivors. Yet the 'East End' here is confined to Tower Hamlets and its Hackney borders.

Newham does have its gems: the *Boleyn*, the *Denmark Arms*, the *Black Lion*, the *Railway Tavern*, the *Eddie*, the *Holly Tree*, the *Golden Fleece*. I've probably forgotten a couple, but you can see how you'd struggle to fill a book.

Even so, *East End Pubs* would make a lovely Christmas present – and it would be nice, of course, to support the Borough's remaining traditional pubs over the festive season by popping in for a pint or two.

East End Pubs: a celebration of East London's most iconic boozers, by Alistair von Lion and Tim George, is published by Hoxton Mini Press at 25 pounds.



Good reads in Newham

The Newham Bookshop in Barking Road tells us these are the top sellers this month:

- **The Woman in Me**
By Britney Spears
- **Wanstead Flats: A Short Illustrated History**
By Mark Gorman & Peter Williams
- **Deadly Game** (signed copies available)
By Michael Caine
- **The Big Dreaming** (illustrated by Daniel Egnéus)
By Michael Rosen
- **Where Are You Really From?**
By Adam Rutherford
- **Stories of Peace and Kindness for a Better World** (illustrated by Mehrdokht Amini)
By Elizabeth Laird

– Compiled by David Ceen, Newham Bookshop

A comedy of errors

In our regular series on monuments around Newham, Julia Omari finds a statue that adds to the case of mistaken identity

The world famous playwright, actor and poet William Shakespeare was born in Stratford-Upon-Avon in the 16th century. It may now be hundreds of years later, but many people still confuse Stratford-Upon-Avon with Newham's very own Stratford.

While Newham can't claim Shakespeare, we do house his likeness in the form of a white stone sculpture that was designed in the 1800s. The statue, which was believed to have

originally been made for the Opera House in Haymarket, was gifted to West Ham County Borough.

A confident looking Shakespeare stands proudly on a tall square based plinth in the garden of the University of East London on Water Lane.

The plaque reads:

This statue of William Shakespeare was presented to the County Borough of West Ham by Councillor J.C. Carroll February 1 1925



©Julia Omari

Dog's story inspired my children's book

Kas Gharu on a personal journey with his special companions

I recently had my very first children's book published. It's called *Bjorn's Story*, a street dog's story of inspiration and hope.

The idea of writing a children's book came to me during lockdown 2020, when I slowly began doing things I enjoyed again. I started to draw, inspired by my dogs, particularly my boy Koda who sadly passed away last year after 12 years.

I first met Bjorn in 2017. I had been helping out at the local dog rescue, alongside my youngest sister Maya. I realised there are some great personalities and stories here, some happy, joyful, inspiring but also some heart-breaking.



Kas with his dog Bo.

Bjorn arrived at the rescue in 2017, so I knew him very well and began to write and illustrate his story in 2020. There are many other stories and characters which I'd like to share someday, but I feel Bjorn has a true story of resilience, inspiration, friendship and hope.

As for myself, I've done something that makes me happy. I'm a middle aged man living in East London and I feel I can hold my head high and say I'm a little proud of myself. Not only for getting Bjorn's story out there, but for also doing something I'm passionate about and enjoy.

For the last ten years I was involved in the construction industry and doing things I didn't enjoy. I've overcome a lot of obstacles and I'm getting to the point where I'm okay with showing the creative side of my personality. One of my closest and most trusted friends, Anna, encouraged me, showing how important a good friendship is.

Like everyone, I've had my struggles. I've found the companionship and friendship of my dogs has helped me greatly, this is a fitting tribute to them.



For full details of these books, and to request a copy, visit: www.newhambooks.co.uk



DECEMBER EVENTS

Compiled by Neandra Etienne

Gallions Reach will be hosting a Festive Season with fun activities. Newham District Food Bank will be onsite on Saturday 2 December. Shoppers can drop off donations to the centre management office through the month or make donations through: localgiving.org/charity/ascension

The Festive Market will be open all day 14-24 December. Land Train with Santa Meet and Greet will be Saturday 16 December, from 11am and 5pm.

www.gallions-reach.co.uk

Stratford Original's Winter Festival consists of designing christmas cookies, huge christmas snow globe, the Grinch, hot chocolate and a festive band. Tuesday 5 December, 4pm-7pm, St John's Church, Broadway, Stratford, E15 1NG

stratfordoriginal.com

Friends of Godwin PTA will be hosting **The Godwin Winter Fair** to raise funds for a playground library and to bring the school community together. There will be music, games and prizes and food. Friday 8 December, after school to 5.30pm, suggested donation £1 per family, Cranmer Road, E7 0JW

www.godwin.newham.sch.uk

University of East London (UEL) Winter Fair and Christmas light switch on is open to the local community. Wednesday 6 December, 12pm-8pm, UEL Docklands Campus, University Way, E16 2RD

www.royaldocks.london

Forest Gate Festive Market has organised a Winter Wonderland with local makers, creatives, small businesses, community workshops and live music. There will be a food bank collection and a drop-off point for gift donations.

Saturday 9 December, 12pm-6pm, Free entry, The Forest Tavern, 173 Forest Gate Lane, E7 9BB

[@forestgate.festivemarket](https://www.instagram.com/forestgate.festivemarket)

There will be food, singing and stalls at **The Ciderhouse Xmas market.**

Thursday 7 December, 4pm-late, Archway 435, the CiderHouse Avenue Rd, E7 0JN

linktr.ee/theciderhouse7

Christmas Market at Good Hotel includes handcrafted treasures, performances, family activities and craft workshops. Saturday 9 December, 12pm - 4pm, Good Hotel, Royal Victoria Dock, Western Gateway, E16 1FA

www.royaldocks.london

Applecourt Arts Christmas market will welcome local crafters, artisans and makers, coinciding with Applecourt Arts Christmas panto. Saturday 9 December, 10am - 6:30pm, 207 Plashet Grove, E6 1BX

applecourtarts.com

The theme for **The Lab E20 weekend Christmas Market** will be the 1980s. The market is produced by RÆBURN Design and supported by We are Get Living.

Saturday 9 and Sunday 10 December, 11am-5pm, 3-4 East Park Walk, E20 1JB, Free entry

[@go.east.vintage](https://www.instagram.com/go.east.vintage)

Stratford Centre's Christmas activities with Santa include their Crackin' Christmas and guess how many crackers are in the giant cracker. 9, 16 and 23 December, 10am-4pm, Stratford Centre, Free

stratfordshopping.co.uk

Royal Wharf Market Festive Bonanza with Santa's Grotto, street food and workshops. Sunday 10 December, 11am-4pm, Corinthian Square, Royal Wharf, E16 2PG

[@royalwharfmarket](https://www.instagram.com/royalwharfmarket)

The **Up Garden Wintertide's** nature-based family activities session includes live music from local musicians Toby Manley and Georgia Burnell.

Sunday 10 December 10:30am-12:30pm, Eric Close Laundry Yard, Forest Gate, E7 0AY

www.theupgarden.org

Rosetta Arts Winter Market includes creative workshops and local artists.

Saturday 16 December, 12pm-5pm, 1 Hamilton Road, E15 3AE

www.rosettaarts.org

Park Village Oasis are lighting up Oasis for the Winter Glow event. At 5pm people will leave their homes in the Park Village area and walk with lanterns and lights to the Oasis on Harberson Road. The community will light up the Oasis and then enjoy some festive fun together.

Everyone is invited to bring a lantern, bring a torch, and bring the light!

Saturday 16 December, 5pm-6.30pm

[@parkvillageoasis_e15](https://www.instagram.com/parkvillageoasis_e15)

West Silvertown Foundation Xmas Youth Meal is a free event, for 10 - 19 year olds. Monday 18 December, 6pm-9pm, Britannia Village Hall and Royal Wharf Community Dock.

wsfroyaldocks.org

Deaf Well Being Group **Deafroots Let's Celebrate Christmas** and the end of 2023 with raffle, games and food.

Tuesday 19 December, 11am-3pm, Adults £5 Children under 10 free, Stratford Library, 3 The Grove, E15

www.deafroots.org.uk

West Silvertown Youth's annual Xmas party for 9-19 year olds will include games, food, crafts and piñata

Wednesday 20 December, 6pm-9pm, Britannia Village Hall and Royal Wharf Community Dock

wsfroyaldocks.org

Advertisement

7"01

SUNDAY 10th DECEMBER - 4:00pm

GROVE GREEN RD E11 - OPP. STATION



FOOD, HOT DRINKS, LIVE MUSIC, LED MARTIAL ARTS PERFORMER AND MENORAH LIGHTING - FREE ENTRY

STEW CURTIS

KLEZMER WITHOUT BORDERS



INFINITY CIRCUS

Funded by



Waltham Forest



L.A.W.S.
Leytonstone and Wanstead Synagogue

WWW.LAWSYNAGOGUE.ORG - 07434 631948

West Ham Park Community Vegetable Garden needs your help

EUGENE CZAUDERNA

West Ham Park contains many joyful spaces. One of them is the community vegetable garden, which can be found behind some hedges near the main entrance on Upton Lane.

Although its primary purpose is to grow fruit, vegetables and flowers, it is also a place to meet like-minded individuals and enjoy the fresh air and peaceful atmosphere. Among the crops we have successfully grown are potatoes, carrots, tomatoes, beans of various kinds, strawberries and raspberries! It is a place where local wildlife, notably various birds including the famous parakeets, can be seen and appreciated.

It can also be used for community events - we recently hosted a local Brownies group, who came to learn about nature. There is also a home-schooling group who come

regularly, most recently learning about the trees in the park, using the community vegetable garden as a base.

But the community vegetable garden needs your help! We need more volunteers, especially those who can contribute some physical labour, mostly digging. We would also like more ideas from people who have some horticultural knowledge - what to plant, how and where. But we welcome everyone, and value everyone's contribution.

Our main sessions are Tuesday between 10am and 12pm, and on Wednesday between 2pm and 4pm, but we would be quite willing to have other sessions if necessary. People interested can contact us through the Park Office on westhampark@cityoflondon.gov.uk, or me personally via hello@friendsofwesthampark.co.uk - or drop in to one of these sessions any Tuesday or Wednesday.



Some of this year's crop

All events are subject to change.

SPORTS SHORTS

Compiled by **Neandra Etienne**

PEACH E16 Women's Self Defence classes are taught by a trauma informed trainer. No experience needed. 5 and 12 December, *Wonderful Things Space*.

peach-e16.org.uk

Ambition Aspire Achieve has two Cycling Clubs. Activities include: learn to ride, Bike-ability, group rides and bike maintenance. Young people with disabilities and/or additional needs welcome. Bikes are available.

Saturdays from 10am to 12pm, all ages from five upwards, £2 per session, *Terence Brown Arc in the Park, Hermit Road Park, Bethell Ave E16 4JT*

Saturdays from 2pm to 4pm, all ages from 5 upwards, £2 per session, *Glyn Hopkin Abbey Hub, 6 Gay Road Stratford, E15 2RN*

theaaazone.com



Ambition Aspire Achieve cycling club

Renewal Programme Christmas Programme includes indoor sports and games for 4-5 year olds and mixed sports (fencing, archery, darts, table tennis, games and non-contact boxing) for 8-11 year olds. Free healthy lunch provided. 21, 22nd, 27, 28, 29 December, *395 High Street North, E12 6PG*

renewalprogramme.org.uk

Looking to stay up to date with all things West Ham? Look no further than **The West Ham Years Newsletter**. Created by author and historian Tim Crane, this fantastic resource is sent to over 2000 devoted Hammers, including 150 ex-players.

Subscribe for free at tcrane183@gmail.com. Back issues are available, too.



Tim Crane (right) with Sir Geoff Hurst



Carpenters Estate basketball court

Carpenters Estate new multi-use games area and basketball court is a collaboration between London Legacy Development Corporation, Wood Street Walls, and Works in Public.

[@atthedovetail_](https://www.instagram.com/atthedovetail_)

St Bons old boy and former Senrab F.C and West Ham United player **Jermain Defoe** returned to St Bons over the half term break to run a football camp.

[@atstbonspe](https://www.instagram.com/atstbonspe)

NewVic student **Khalam** represented Team GB in the **European Fencing Confederation U17** in Nuremberg. Khalam achieved the top 70 position out of 200 young people who played on Sunday 19 and Monday 20 November 2023. His goal is to compete in the 2028 Summer Olympics in Los Angeles.



NewVic student Khalam

Tessa Sanderson Run is an all-inclusive running group. All ages, genders and abilities are welcome to run, jog or walk 2-5 km around West Ham Park.

No registration is needed. Sundays at 11am, *West Ham Park*

www.westhampark-sunday-run.org.uk

Former Newham Recorder Editor and Ambition Aspire Achieve trustees **Colin Grainger** is taking part in his annual Sponsored Swim to raise funds for the Kevin Jenkins OBE Newham Christmas Toy Appeal.

Colin will be diving for the 46th year in a row. He aims to complete 50 lengths breast stroke to help raise money for the appeal, despite recently undergoing a hernia operation. But he is determined to do it again this December.

colin-grainger.co.uk

Newham based **Thames Dragon Boat Club** took 22 people to Hong Kong to participate in the Dragon Boat racing event as part of the 11th Gay Games last month.

Thames Dragons came back with a fifth place in the All-gender, fourth in the Women's, third in the Men's and second in the International Competition.

thamesdragons.club



Thames Dragon Boat Club in Hong Kong

Ambition Aspire Achieve Kevin Jenkins OBE Newham Christmas Toy Appeal 2023 is aiming to help 3000 disadvantaged young people in Newham receive a gift this Christmas.

Ambition Aspire Achieve are thankful to Tomáš Souček, Vladimír Coufal, and Maxwell Cornet from West Ham United who came along to launch their Kevin Jenkins OBE Newham Christmas Toy Appeal.

Check out their dedicated Just Giving Page or Amazon Wish list to buy a gift!

[justgiving.com/campaign/valeroxmasappeal2023](https://www.justgiving.com/campaign/valeroxmasappeal2023)

[amazon.co.uk/hz/wishlist/ls/2MKK7P7Y-D4UL6?ref_=wl_share](https://www.amazon.co.uk/hz/wishlist/ls/2MKK7P7Y-D4UL6?ref_=wl_share)

Congratulations to **East London RFC!** They have been named Diversity and Inclusion Club of the Year at the national Club Awards 2023 in Leicester (22 November)

eastlondonrfc.com



East London RFC. Photo via Twitter

"Lost Stadiums: West Ham Speedway" documentary screening with support from Heritage Fund UK

4 December, from 6.30pm at *Royal Docks Learning and Activity Centre, Albert Road, E16 2JB*

www.rdlac.org

Dates and times of all games and events are subject to change. Please email your news game fixtures to neandra.etienne@newhamvoices.co.uk

Advertisements

LICENSING ACT 2003 APPLICATION FOR A PREMISES LICENCE

ARULSARA RETAIL LTD have applied to NEWHAM COUNCIL to vary the premises licence for:

58 UPTON LANE, FOREST GATE E7 9LN as the following licensable activities may be provided on the following days and hours:

The Supply of Alcohol: Monday-Sunday: 07.00 to 23.30 pm

Newham Council's Licensing Register is kept at the office of the Licensing Team, East Ham Town Hall, Barking Road, London E6 2RP (open 10am to 4pm Monday to Friday), 020 3373 1925, where details of the application may be inspected.

Any representations against the application must be made in writing and received by the Licensing Team at the above address or via our website <https://www.newham.gov.uk/Pages/Services/Premises-alcohol-and-entertainment-licence.aspx>, no later than the **21 December 2023**

Individuals, businesses and other bodies may make representations in relation to the application. Representations must be relevant and can only be based upon the Licensing Objectives; the prevention of crime and disorder, public safety, the prevention of public nuisance, and the protection of children from harm. Copies of all representations will be sent to the applicant. Persons making representations will have to appear at the Councils' Licensing Sub-Committee.

Note: It is an offence, liable on conviction to a fine up to £5,000 for an applicant to knowingly or recklessly make a false statement in connection with the application.

THE MARINE AND COASTAL ACCESS ACT 2009 THE MARINE WORKS (ENVIRONMENTAL IMPACT ASSESSMENT) REGULATIONS 2007 (AS AMENDED)

APPLICATION FOR: SILVERTOWN QUAYS – ROYAL VICTORIA DOCK WORKS

Notice is hereby given that The **Silvertown Partnership LLP, 5 Merchant Square, London, W2 1BQ** has applied to Marine Management Organisation, ("MMO") for a marine licence to carry out a regulated activity under the Marine and Coastal Act 2009. The project requires an environmental impact assessment ("EIA") consent and is subject to the requirement for an EIA under the Marine Works (Environmental Impact Assessment) Regulations 2007 ("the EIA Regulations"). An environmental statement has been prepared by the applicant.

The application is to:

The Silvertown site is located at the brownfield site to the south of Royal Victoria Docks, London. The wider site is subject to a major urban regeneration scheme, which includes new residential and commercial buildings at and around the water frontage.

In order to create these facilities, a variety of works will need to be undertaken across Royal Victoria Docks (RVD). This includes works such as repairing dock walls, installing new surface water drainage outfalls and the partial infilling of a finger dock to reduce the water level. The works are known as the Royal Victoria Docks Dock Works (hereafter referred to as "the Proposed Development").

Copies of the environmental statement and the above documents can be viewed online in the MMO's Public Register at www.gov.uk/check-marine-licence-register

A copy of the application, environmental statement and other documents required by the EIA Regulations are also available for public inspection, free of charge, during normal office hours at The Britannia Village Hall for a period of 42 days from the date of the first notice on 30th of November 2023.

Copies of the same documents may also be inspected free of charge, during normal office hours and by prior appointment at the offices of the MMO, Lancaster House, Newcastle upon Tyne, during the same period.

If printed copies of the above documents are requested, a charge (not exceeding reasonable copying costs) may be payable.

Representations in respect of the application should ordinarily be made by:

- Visiting the MMO public register at https://marinelicensing.marinemanagement.org.uk/mmofox5/fox/live/MMO_PUBLIC_REGISTER/search?area=3 and accessing the 'make a comment' section of case reference MLA/2023/00232.

However, we will also accept representations via the following formats:

- By email to marine.consents@marinemangement.org.uk; or alternatively
- By letter addressed to Marine Management Organisation, Lancaster House, Hampshire Court, Newcastle upon Tyne, NE4 7YH.

In all cases, correspondence must:

- Be received within 42 days of the date of the first notice (2);
- Quote the case reference MLA/2023/00232; and
- include an address to which correspondence relating to the representation or objection may be sent.

Representations received from members of the public will be dealt with in accordance with Schedule 5 of the EIA Regulations. Copies of written representations received by MMO will be sent to the applicant and may also be made publicly available. The MMO is an appropriate authority under the EIA Regulations. In determining the application, the MMO as appropriate authority will make the EIA consent decision for the project. The MMO will also make a decision whether to grant regulatory approval (for a marine licence) under Part 4 of the Marine and Coastal Access Act 2009

Scoring for the community



Mickey Ambrose celebrates good times for football in Newham – at Premier League and community levels

Following the international break it was back to league football and in the Premier League our beloved Hammers, who have had a rough patch, finally got a win to chalk up three points against newly promoted Nottingham Forest.

Thomas Soucek struck a really late winner as the Hammers fought back from 2-1 down to beat Nottingham Forest 3-2 in a thrilling match at the London Stadium.

The provider of both West Ham's late goals was the industrious James Ward-Prowse from corners. This after Lucas Paqueta had put the Hammers – who had won just one of their previous seven Premier League outings – in front inside three minutes after a quite glaring error from Nicolas Domingues. But the teams went in level at the break after Taiwo Awoniyi tapped in when Morgan Gibbs-White's shot was saved.

Athony Elanga's goal turned the game in Forest's favour for the first time in



WSC Community Football ©Serpell-Rand Photography

just over an hour but West Ham hit back when Jarrod Bowen headed home Ward-Prowse's pinpoint corner to set up a tense finale.

Then up stepped Soucek who had the final say. After stretching to divert a cross onto the bar, the Czech midfielder won the game when he leapt to meet another Ward-Prowse corner and planted a header beyond Odysseas Vlachodimos.

West Ham moved to ninth after taking the points, while Nottingham

Forest stayed down in 15th.

Meanwhile, the Westfield Stratford City community football tournament took place at the London Marathon Community Track, Stratford on Thursday 16 November.

It is an exciting initiative aiming to foster camaraderie among Stratford residents. This tournament sought to build positive relations between the Westfield security team, local police, Safer Business Network, London Borough of Newham Youth Empowerment Team, Hackney charity, The Wickers and the young residents of the area – and it worked.

The tournament welcomed over 100 participants and spectators with the opportunity for the security team and police officers to interact with the youth in a friendly and informal setting. Through this shared experience, it is hoped that mutual trust and respect will be fostered, leading to stronger relationships and a safer community for all.

Results: Under 18s match: LBN Youth Empowerment v The Wickers Charity 5: 4; and Over 18s match: Westfield v Community United 1: 8.

Thanks to: the London Marathon Community Track for hosting the match; Chris Betts, General Manager of Westfield Stratford City and Cllr Amar



Mickey Ambrose

Virdee, Cabinet Member for Community Safety and Crime for presenting the medals and 'Player of the Match' trophies; West Ham for providing the Referee; and St John Ambulance volunteers

Chris Betts, General Manager, Westfield Stratford City, said: "The tournament is more than a game – it's a testament to the strength of unity, fostering connections between our diverse community members and the shared goal of creating a safer, stronger community for all."

I wholeheartedly support social initiatives of this kind that bring us all together as one, that involve equality, diversity and inclusion and I would personally like to thank Hannah Durling, Social Value Manager, Westfield and Jessica Phillips-Martin of Unibail Rodamco-Westfield and the team for making this a success. Perhaps this could be an annual event?

Mickey Ambrose is a former Chelsea and Charlton player who lives in Stratford



WE NEED YOUR HELP

We are looking for people in Newham who can help support us to produce more high-quality local journalism in *Newham Voices*

Can you help us? Our membership scheme has many different options depending on your ability to contribute. Rewards include having a copy of the paper posted to you every month. Local businesses and charities can also sign up and access discounts on advertising.

Find out more at: newhamvoices.co.uk/membership

OUR CURRENT MEMBERS

Aruthy A, Asesola Fani-Kayode, Hans Beck, Tee Fabikun, Jean Gray, John Gray, Norbert Lieckfeldt, Jane Lofthouse, Susan Masters, Ronan O'Brien, Florian Schmal, Christophe Peters, Irmgard Peters, Victoria Parkinson, Amin Rahman, Richard Stevenson, Richard Stubbs, Patrick White, Lee Woodyear, Maureen Wood, Robbie Judkins, Ann-Marie Ashton, Rosie Whicheloe, Clive Power, Daphne Stedman, Carlton Lubowa, Jared Shurin, Claire Pattie